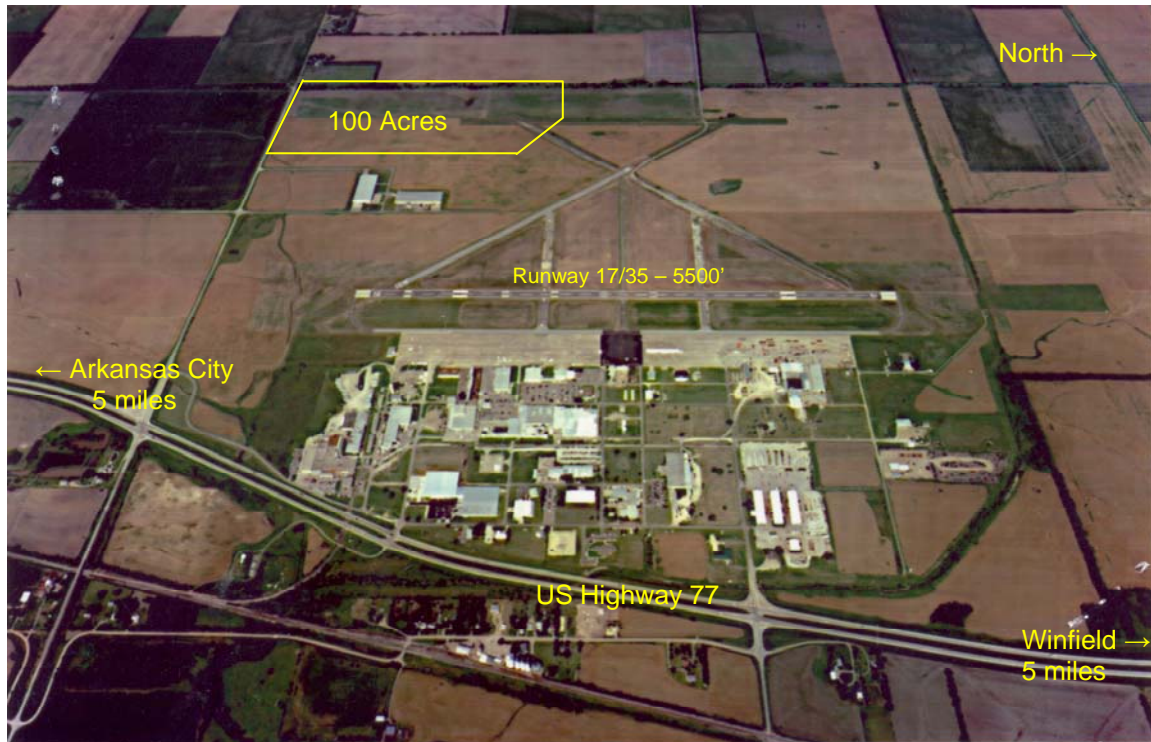




Cowley County Economic  
Development Partnership  
*partnering people & places*

Strother Field Airport/Industrial Park, Winfield, KS  
100 acres available



**Site Information:**

Site name—Strother Field Airport/Industrial Park  
Street Address—222<sup>nd</sup> Road, Winfield, KS 67156

Minimum acreage available—20 acres  
Maximum acreage available—180 acres

Zoning—No zoning, Strother covenants  
Phase 1 Environmental report—Yes  
Soil boring report—No

Divisible—Yes  
For Sale—Yes  
Lease—Yes  
Sale Price—Negotiable  
Ownership—Cities of Arkansas City  
and Winfield

**Transportation Information**

Distance to 4-lane highway: ½ mile - US Highway 77  
Distance to 2-lane highway: 5 miles north to Winfield - US Highway 160  
7 miles south to Arkansas City - US Highway 166  
Distance to Interstate: 23 miles - Interstate 35 via US Highway 160  
Distance to Commercial Airport: 50 miles - Wichita Mid-Continent Airport

Rail served or access—Access by BNSF

Kerri Falletti, CEcD

*Economic and Community Development Director*

Office: 620-221-9951 (Winfield) 620-442-3094 (Ark City) Cell: 620-218-5482

Fax: 620-221-7782 22193 Tupper Street, Suite 1 Winfield, KS 67156

kfalletti@cowleycounty.org www.cowleyfirst.com

## Strother Field Airport/Industrial Park, Winfield, KS

### Utilities:

Electric service provider—City of Winfield  
Natural Gas provider—City of Winfield  
Water provider—Strother Field  
Wastewater provider—Strother Field

Size of line—8 in PVC/200GPM  
Size of gas line—4 in 35 PSI  
Size of line—8 in PVC 45-50 PSI

### Contact Information

Strother Field – Cities of Arkansas City and Winfield  
Shawn McGrew, Manager  
PO Box 747  
Winfield, KS 67156  
Phone: 620-221-9280

Cowley First  
Kerri Falletti, Director  
22193 Tupper St, Ste 1  
Winfield, KS 67156  
Phone: 620-221-9951

### Strother Field Industrial Park Aerial View

